

uptown



- 1 grand central terminal**
 beyer blinder belle
 1999 ies lumen citation
 1999 lucy g mores preservation award
 (42nd street between vanderbilt & lexington avenue)



- 2 chrysler building lobby**
 beyer blinder belle
 (405 lexington avenue between 42nd & 43rd street)



- 3 metlife building lobby**
 kohn pedersen fox
 2004 iald award of excellence
 (directly behind grand central terminal)



- 4 new york public library
 rose main reading room**
 davis brody bond
 1999 ies lumen citation
 1999 lucy g mores preservation award
 (476 5th avenue between 40th & 42nd street)



- 5 international center for photography**
 gwathmey siegel & associates
 (1133 6th avenue on the corner of 43rd street)



- 6 times square site one**
 skidmore, owings & merrill
 (42nd street and 7th avenue - southeast corner)



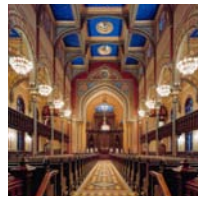
- 7 ernst & young building - 5 times square**
 kohn pedersen fox
 (42nd street and 7th avenue - southwest corner)



- 8 tkts ticket booth**
 perkins eastman
 john choi & tai ropiha
 (duffy square at 47th street & broadway)



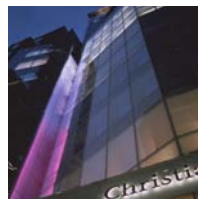
- 9 radio city hall renovation**
 hardy holzman pfeiffer
 2000 iald award of merit
 2000 ies lumen award of merit
 2000 lucy g mores preservation award
 (1260 6th avenue between 50th & 51st street)



- 10 central synagogue**
 hardy holzman pfeiffer
 2004 ies award of merit
 (123 east 55th street at lexington avenue)



- 11 four seasons hotel**
 pei cobb freed
 1994 ies lumen citation
 (57 east 57th street between park & madison avenue)



- 12 louis vuitton headquarters lobby & facade**
 atelier christian de portzamparc/hillier
 (19 east 57th street between 5th avenue & madison)



- 13 chanel flagship**
 peter marino
 (15 east 57th street between 5th avenue & madison)



- 14 brasserie 8 1/2**
 hardy holzman pfeiffer
 (9 west 57th street between 5th & 6th avenue)



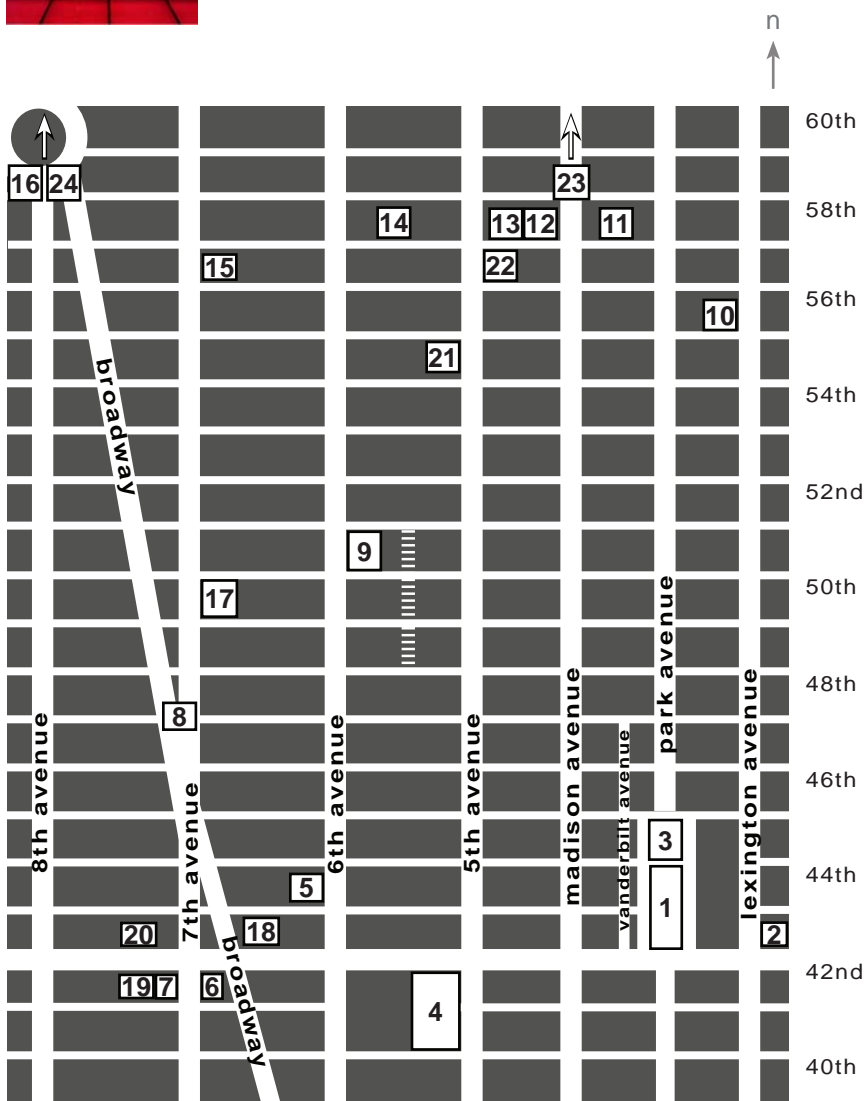
- 15 carnegie hall renovation**
 polshek partnership
 1987 iald citation for lighting design restoration
 (881 7th avenue between 56th & 57th street)



- 16 american museum of natural history
 rose center for earth and space**
 polshek partnership
 2001 iald award of excellence
 2001 ies lumen citation
 2001 edwin guth memorial award of excellence
 (79th street & central park west)

also visit

- 17 lehman brothers building (barclays capital)**
 kohn pedersen fox
 (745 7th avenue between 49th & 50th street)
- 18 conde nast - 4 times square**
 fox and fowle
 (on 42nd between 6th avenue & broadway)
- 19 new amsterdam theatre**
 hardy holzman pfeiffer
 (214 west 42nd street between 7th & 8th avenue)
- 20 new victory theatre**
 hardy holzman pfeiffer
 (209 west 42nd street between 7th & 8th avenue)
- 21 peninsula hotel**
 stonehill & taylor / faithful & gould
 (700 5th avenue between 54th & 55th street)
- 22 gucci flagship**
 gucci worldwide store planning
 (725 5th avenue between 56th & 57th street)
- 23 chanel fine jewelry**
 peter marino
 (733 madison avenue between 64th and 65th street)
- 24 american museum of natural history
 77th street facade**
 wiss janney elstner
coming in 2009
 (77th street between central park west and columbus ave)



downtown

lightnyc



- 1 world trade center memorial museum**
davis brody bond
coming in 2012
(bordered by west side highway and church street between vesey & liberty street)



- 2 world trade center memorial plaza**
michael arad & peter walker and partners
coming in 2012
(bordered by west side highway and church street between vesey & liberty street)



- 3 world trade center pavilion**
snøhetta as
coming in 2012
(bordered by west side highway and church street between vesey & liberty street)



- 4 world trade center tower 2**
foster + partners
coming in 2012
(bordered by west side highway and church street between vesey & liberty street)



- 5 world trade center tower 3**
richard rogers partnership
coming in 2012
(bordered by west side highway and church street between vesey & liberty street)



- 6 world trade center tower 4**
maki and associates
coming in 2012
(bordered by west side highway and church street between vesey & liberty street)



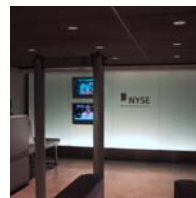
- 7 world trade center transportation hub**
santiago calatrava
coming in 2012
(bordered by west side highway and church street between vesey & liberty street)



- 8 world financial center battery park city**
cesar pelli
(west side highway between vesey & liberty street)



- 9 tweed courthouse**
john g waite associates
(52 chambers street between broadway & centre street)



- 10 new york stock exchange 2 broad street lobby**
perkins & will
(2 broad street between exchange & wall street)



- 11 robert f wagner jr park**
olin partnership machado and silvetti
(west side highway from 1st place to ferry terminal)



- 12 hudson river park**
ove arup
(west side highway from leroy to bank street)



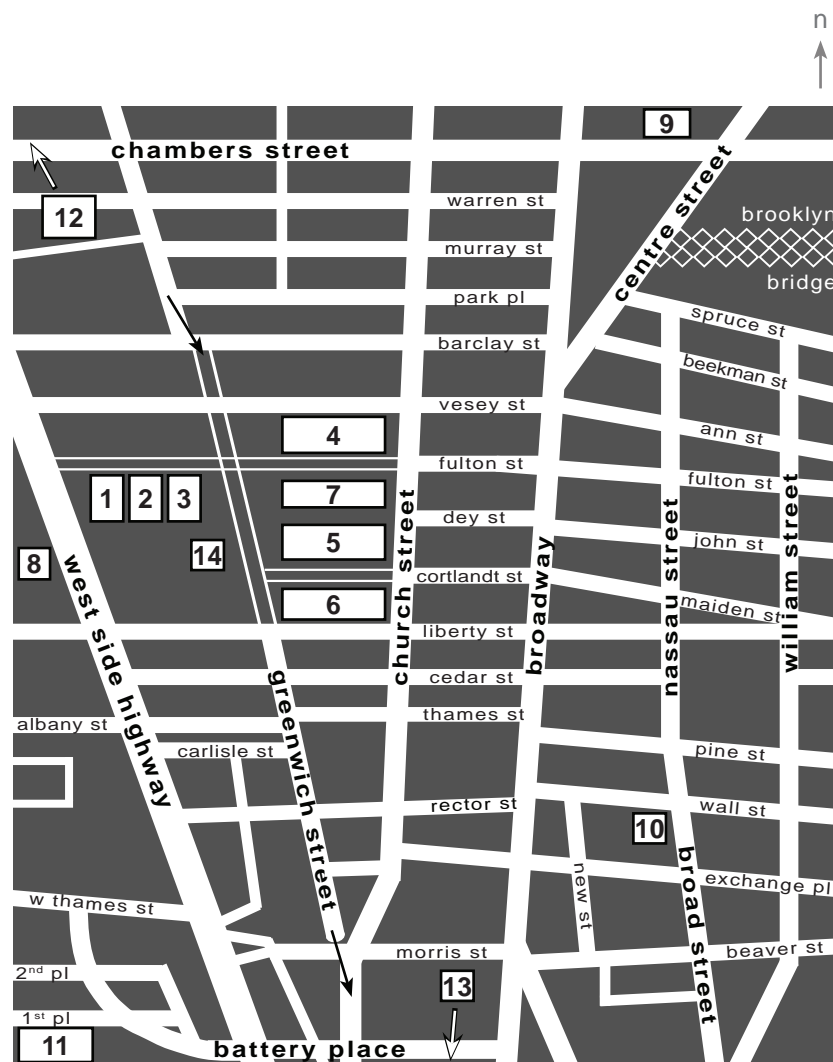
- 13 postcards - the staten island september 11th memorial**
masayuki sono, lapshan fong, collaborator
new york construction best of 2004 awards citation
aia ny chapter public project of the year
(north shore esplanade adjacent to ferry terminal)



- 14 tribute in light**
john bennett, gustavo bonevardi, richard nash gould, julian laverdiere and paul myoda paul marantz, jules fisher, charles stone & fms team
municipal art society of new york and creative time
2002 ies special recognition award
(temporary installation)

also visit

- jobab j javits convention center**
javits ll architecture/lehman|smith & mcleish
(on 12th avenue between 34th & 39th street)
- brooklyn museum of art**
polshek partnership
(200 eastern parkway, brooklyn ny)
- ellis island**
beyer blinder belle
(take statue of liberty/ellis island ferry from battery park)
- the bronx zoo**
rockwell group
(2300 southern boulevard, bronx ny)



all streets not represented by map above



FISHER MARANTZ STONE
Partners in Architectural Lighting Design

22 West 19th Street
New York City 10011
+1 212.961.3020
www.fmsp.com